

LaSalle

Amsterdam

AUTUMN | WINTER 2025





52.SC.30 Boucle bomber jacket | 52.VC.05 Viscose high neck top | 52.IV.82 Wide leg jeans



52.FM.05 Alpaca bubble knit cardigan | 52.FM.06 Alpaca bubble knit sweater | 52.FK.05S Suede A-line skirt



52.AN.05 Cashmere blend sweater | 52.RA.17 Cotton wide leg trousers



52.RA.03 Fake fur jacket | 52.CA.01 Cashmere blend sweater | 52.IV.81 Bootleg jeans



52.HP.01 Viscose smock dress



52.AN.01 Cashmere blend button cardigan | 52.GB.02 Cashmere blend open cardigan | 52.HV.06 Satin hammered viscose pants



52.FK.12L Short leather jacket | 52.MA.04 Short sleeve alpaca crew neck sweater | 52.TN.05 Cashmere scarf | 52.RA.12 Viscose blend trousers



52.SI.01 Pop over silk top | 52.SI.07 Silk A-Line skirt



52.CA.04 Perforated cashmere blend cardigan | 52.WO.03 Wool blend shirt | 52.WO.10 Wool blend skirt with pleats



52.MA.03 Alpaca crew neck sweater | 52.MA.05 Alpaca scarf | 52.SO.11 Long puff jacket | 52.IV.82 Wide leg jeans



52.HV.03 Hammered viscose shawl neck dress



52.CA.02 Cashmere blend sweater | 52.WP.04 Wide leg wool punto trousers | 52.RA.15 Long boiled wool coat



52.HP.03 Printed shawl neck viscose dress



52.WO.08 Wool blend boxy top | 52.WO.09 Wool blend trousers



52.SC.04 Bomber jacket | 52.SC.03 Pleated skirt | 52.MA.09 Merino wool high neck sweater



52.IV.65 Cotton taffeta side tie dress



52.FK.08S Suede shirt | 52.PM.15 Cashmere V-neck sweater | 52.RA.19 Cropped cotton trousers



52.SI.05 Silk high neck dress



52.AT.02 Bonded travel quality shirt | 52.AT.10 Bonded travel quality trouser



52.AN.04 Two-tone cashmere blend poncho | 52.WO.03 Wool blend shirt | 52.WO.04 Wool blend slim trousers



52.FK.01S Suede jacket | 52.MA.01 Alpaca cardigan | 52.IV.67 Cotton taffeta trousers



52.RA.02 Wool/cashmere coat | 52.HV.05 Hammered viscose skirt | 52.HV.07 Hammered viscose top



52.WO.07 Wool blend long sleeve shirt dress



52.AN.02 Cashmere blend V-neck sweater | 52.RA.17 Cotton trouser
52.MC.03 Tencel polo



52.MC.03 Tencel boat neck top | 52.MC.05 Tencel panel skirt
52.MC.07 Tencel scarf



52.GB.03 Wool front flap sweater | 52.RA.12 Viscose blend straight pants



52.FK.01L Leather jacket | 52.MA.12 Wool crew neck crochet sweater | 52.RA.11 Viscose blend slim fit trouser



52.FM.07 Alpaca high neck sweater | 52.RA.19 Cotton cropped pants



52.IV.66 Cotton taffeta shirt dress



52.MA.04 Alpaca short sleeve sweater | 52.FK.05L Leather A-line skirt



52.HP.03 Viscose shawl neck dress



52.GB.01 Wool/cashmere cardigan | 52.MA.03 Alpaca crew neck sweater | 52.WP.03 Wool punto pencil skirt | 52.TN.05 Cashmere scarf



52.SI.03 Relaxed silk shirt | 52.IV.81 Bootcut jeans



52.FM.08 Alpaca crew neck sweater | 52.WP.04 Wool punto wide leg trousers | 52.RA.15 Boiled wool long jacket



52.HV.07 Viscose blend V-neck loose fit top | 52.HV.05 Viscose blend A-line skirt



52.SI.04 Silk shirt dress



52.WO.06 Wool blend shirt dress



52.PM.13 Cashmere funnel neck sweater | 52.AT.06 Bonded travel quality blazer | 52.AT.07 Bonded travel quality bootleg trousers



52.SI.08 Silk pleated shirt dress



52.VI.19 Tencel wrap top long sleeve | 52.SC.03 Pleated skirt
52.FK.12L Leather short jacket



52.CA.01 Wool/cashmere crew neck sweater | 52.SO.10 Puff oversized jacket | 52.IV.81 Bootcut jeans



52.AT.14 Travel quality shirt dress



52.RA.02 Wool/cashmere long coat | 52.RA.06 Viscose punto raised neck top | 52.RA.07 Punto straight wide pants



52.IV.64 Cotton taffeta shirt dress



52.AT.01 Bonded travel quality jacket | 52.PM.14 Cashmere poncho sweater | 52.AT.08 Bonded travel quality slim leg trousers
52.TN.05 Cashmere scarf



52.MA.09 Merino wool high neck sweater | 52.IV.63 Taffeta short lapel jacket | 52.IV.61 Taffeta box pleat skirt



52.BS.06 Double sided scarf - Cafe and Paint
80% modal/20% silk



52.BS.04 Double sided scarf - Horse
80% modal/20% silk



52.BS.01 Double sided scarf - Flowers and Tiles
80% modal/20% silk



52.BS.05 Double sided scarf - Paradise
80% modal/20% silk



52.BS.15 Paradise Birds
100% wool



52.BS.03 Double sided scarf - Geisha
80% modal/20% silk



52.BS.14 Nightingale
100% wool



52.BS.08 Amsterdam
100% wool

LaSalle AW25



52AH01 - Miami
100% Wool
70 x 180cm



52AH02 - Marble
75% Wool/25% Modal
100 x 180cm



52AH03 - Paris
75% Wool/25% Modal
100 x 180cm



52AH07 - Coneflower
75% Wool/25% Modal
100 x 180cm



52AH08 - White Lilies
75% Wool/25% Modal
70 x 180cm



52AH09 - Tiger Green
80% Wool/20% Modal
100 x 180cm



52AH10 - Graffiti
75% Wool/25% Modal
70 x 180cm



52AH11 - Queen
90% Wool/10% Silk
70 x 180cm



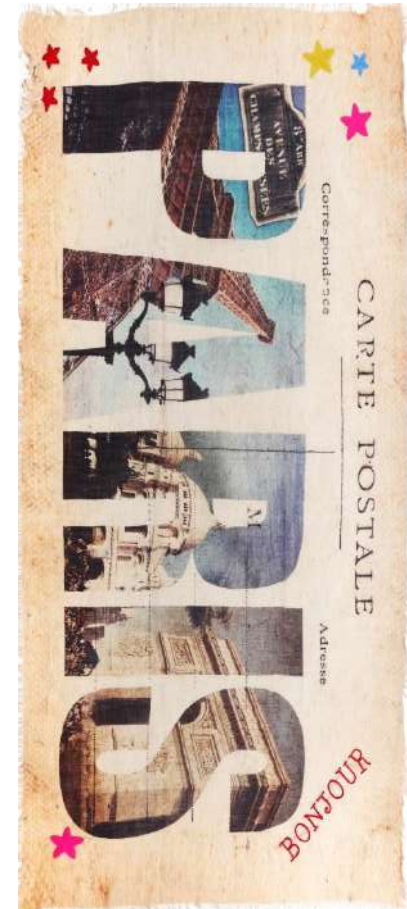
52AH12 - Carpet Yellow
90% Wool/10% Silk
70 x 180cm



52AH16 - Taupe
100% Wool
70 x 180cm



52AH17 - Love Letter
75% Wool/25% Modal
70 x 180cm



52AH18 - Postcard Paris
75% Wool/25% Modal
100 x 180cm



52AH34 - Pink Leo
90% Modal/10% Silk
100 x 180cm



52AH35 - Vines
90% Modal/10% Silk
100 x 180cm



52AH36 - Watercolor
100% Wool
100 x 180cm



52AH37 - Tulip
100% Wool
70 x 180cm



52AH38 - Leaves
100% Wool
70 x 180cm



52AH39 - Astrology
90% Modal/10% Silk
100 x 180cm



52AH43 - Art
100% Wool
100 x 180cm



52AH44 - Collage
100% Wool
100 x 180cm



52AH45 - Parrots
100% Wool
70 x 180cm

DOUBLE SIDED SCARF

Front



52AH61 - Ram Lady
90% Modal/10% Silk
140 x 140cm

Back



52AH61 - Ram Lady
90% Modal/10% Silk
140 x 140cm

DOUBLE SIDED SCARF

Front



52AH62 - Travels
90% Modal/10% Silk
140 x 140cm

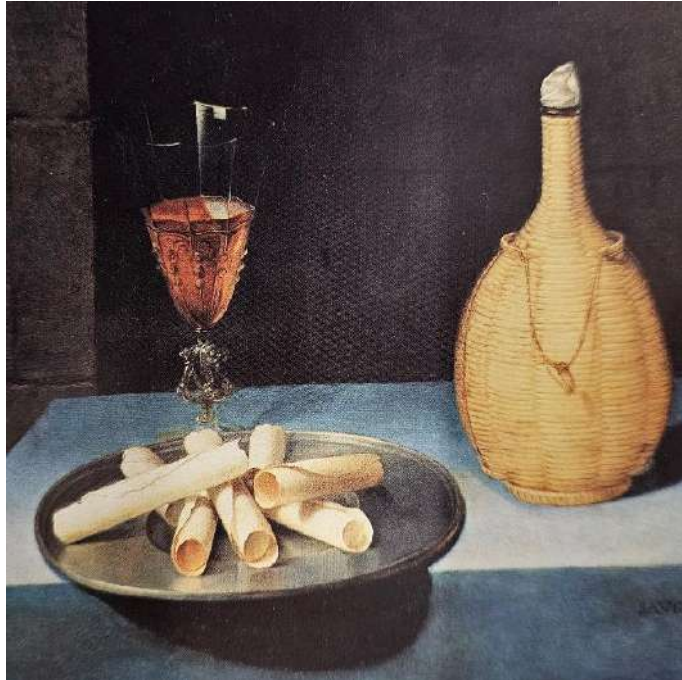
Back



52AH62 - Travels
90% Modal/10% Silk
140 x 140cm

DOUBLE SIDED SCARF

Front



52AH63 - War and Peace
90% Modal/10% Silk
140 x 140cm

Back



52AH63 - War and Peace
90% Modal/10% Silk
140 x 140cm

DOUBLE SIDED SCARF

Front



52BS03 - Geisha/Dragonfly
80% Modal/20% Silk
70 x 180cm

Back



52BS03 - Geisha/Dragonfly
80% Modal/20% Silk
70 x 180cm

DOUBLE SIDED SCARF

Front



52BS04 - Horse
80% Modal/20% Silk
70 x 180cm

Back



52BS04 - Horse
80% Modal/20% Silk
70 x 180cm